

File size: 16.Mb

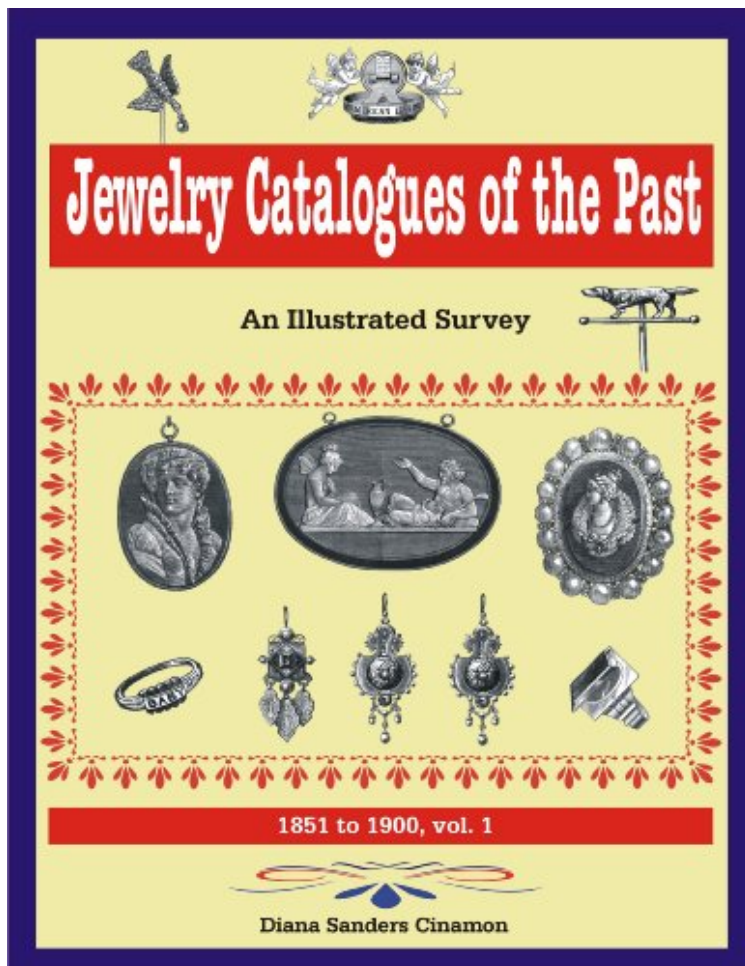


DOWNLOAD



Read more

Diana Sanders Cinamon
*ebooks / Download PDF / *ePub / DOC / audiobook*



[Download pdf] Jewelry Catalogues of the Past, an Illustrated Survey: 1851 to 1900, vol. 1

Jewelry Catalogues of the Past, an Illustrated Survey: 1851 to 1900, vol. 1

Diana Sanders Cinamon : Jewelry Catalogues of the Past, an Illustrated Survey: 1851 to 1900, vol. 1 before purchasing it in order to gage whether or not it would be worth my time, and all praised Jewelry Catalogues of the Past, an Illustrated Survey: 1851 to 1900, vol. 1:

An illustrated history of jewelry catalogs dating from 1851 to 1900. Organized by type of jewelry, chronologically, for quick reference. Includes a glossary of period terminology, short histories of period jewelers, and styles timeline.

About the AuthorDiana Sanders Cinamon is a personal property appraiser with a specialty in antique jewelry and antique metals . She is a certified gemologist (C.G., SCC) graduating from the Santiago Canyon College gemology department. She is also a graduate of the College for Appraisers carrying the designation of Graduate Certified

Appraiser (G.C.A.) Active in the appraising community, Mrs. Cinamon is a member of Appraisers National Association, previously serving as President and Vice-President. As a member of the SCC gemology alumni association, Mrs. Cinamon has also served as Vice-President for this organization. Mrs. Cinamon teaches the antiques program for Bellflower Adult School. She also teaches "Antique and Period Jewelry" and "Pearls" for the gemology department at Santiago Canyon College. She team-teaches "Appraisal Theory" with Geoff Nelson, G.G. Mrs. Cinamon also served as the "Green Room" assistant for the "Antiques Roadshow", Portland Oregon Venue in 2004. Most recently, Mrs. Cinamon has been selected as the Los Angeles Antiques and Collectibles Columnist for examiner.com. Her diverse background in the antiques industry makes her an ideal candidate for the demands of weekly column.